

National Cesar E. Chavez Blood Drive Challenge

2012 - Most Successful Blood Drive - Award

RED numbers are Points earned based on a 20-1 scale; 20 points going to the 1st (most) place scaling down to 1 point to the 20th place within each of the 10 different point categories; then accumulated points are added up for a school total
 Blood drives that usually accumulate the most points are typically larger blood drives, they surpass their own set goals, and successfully report complete results data.

Points	2012	2011	2010	2009	225 Participating Colleges / Universities	Avg:	Total:		Total:		Total:		Blood Center					
							Pints Goal	Pints Collected	% of Goal	Donors Goal	Donors Registered	% of Goal		Donors H/L	% of Donors	Donors 1st	% of Donors	
							16,655	16,075	20,596	19,080	5,479	4,960						
							74	71	102%	91	86	102%	30	38%	27	32%		
12					WY University of Wyoming		175	5 86	49.1%	200	4 93	46.5%	25	26.9%	53	57.0%	3 United Blood Services	
12					CA Modesto Junior College		134	128	95.5%	161	173	107.5%	69	1 39.9%	77	11 44.5%	BloodSource	
11					CA University of Southern California		24	36	150.0% 1	29	50	172.4% 10	17	34.0%	Unk		American Red Cross	
11					WA Clark College		30	29	96.7%	44	33	75.0%	28	84.8% 11	17	51.5%	American Red Cross	
11					CA East Los Angeles College		118	112	94.9%	132	190	1 143.9%	85	10 44.7%	45	23.7%	American Red Cross	
11					CO University of Denver		53	104	196.2% 11	81	120	148.1%	11	9.2%	24	20.0%	Bonfils Blood Center	
10			2nd		CA West Hills Community College District		100	136	136.0%	155	179	115.5%	85	10 47.5%	37	20.7%	Central California Blood Center	
9					WA Central Washington University		38	36	94.7%	45	45	100.0%	25	55.6%	28	62.2%	9 American Red Cross	
9					TX Mountain View College - Dallas Community Colleges		20	26	130.0%	30	34	113.3%	28	82.4%	9	17.6%	American Red Cross	
8					TX Texas A&M University - College Station		20	24	120.0%	26	29	111.5%	Unk		18	62.1%	8 American Red Cross	
8					NJ Stevens Institute		40	72	180.0% 8	48	67	139.6%	3	4.5%	23	34.3%	American Red Cross	
7					CA CSU Dominguez Hills		35	43	122.9%	40	56	140.0%	30	53.6%	33	58.9%	7 City of Hope National Medical Center	
7					CA Los Angeles Mission College		100	61	61.0%	140	73	52.1%	57	78.1%	7	19	26.0%	American Red Cross
7					CA Pasadena City College		96	104	108.3%	116	147	126.7%	80	7 54.4%	34	23.1%	American Red Cross	
7					FL University of Miami		20	34	170.0% 7	30	37	123.3%	12	32.4%	3	8.1%	Community Blood Centers	
7					NJ Rutgers University		108	109	100.9%	162	131	80.9%	30	22.9%	71	7 54.2%	American Red Cross	
5					AZ Arizona Western College - Yuma		71	102	143.7%	85	124	145.9%	43	34.7%	61	5 49.2%	United Blood Services	
5					CA California State University Northridge		42	61	145.2%	55	89	161.8% 5	25	28.1%	35	39.3%	American Red Cross	
5					GA University of West Georgia		150	1 76	50.7%	200	4 101	50.5%	12	11.9%	31	30.7%	American Red Cross	
5					TX University of Texas at El Paso		66	55	83.3%	79	59	74.7%	44	74.6%	5	12	20.3%	United Blood Services
4					CA CSU Channel Islands		24	27	112.5%	20	32	160.0% 4	6	18.8%	12	37.5%	United Blood Services	
4					CA CSU Chico		145	95	65.5%	200	4 106	53.0%	19	17.9%	27	25.5%	BloodSource	
4					CA UC Merced		160	4 126	78.8%	195	168	86.2%	68	40.5%	42	25.0%	BloodSource	
4					OR Oregon State University		32	37	115.6%	40	41	102.5%	30	73.2%	4	9	22.0%	American Red Cross
4					CA Sonoma State University		40	57	142.5%	55	88	160.0% 4	22	25.0%	17	19.3%	Blood Centers of the Pacific	
4					CA Rio Hondo College		100	145	1 145.0%	130	199	3 153.1%	64	32.2%	7	3.5%	Presbyterian Hospital	
3					CA UC San Diego		90	114	126.7%	110	131	119.1%	32	24.4%	56	3 42.7%	San Diego Blood Bank	
3					UT University of Utah		25	21	84.0%	35	22	62.9%	16	72.7%	3	9	40.9%	American Red Cross
3					MI Michigan State University		100	78	78.0%	100	55	55.0%	40	72.7%	3	5	9.1%	American Red Cross
2					MA Harvard University - Law School		153	2 109	71.2%	183	140	76.5%	Unk		Unk		American Red Cross	
2					WA Eastern Washington University		110	100	90.9%	135	136	100.7%	63	46.3%	54	2 39.7%	Inland Northwest Blood Center	
1					CA Ventura College		33	35	106.1%	41	65	158.5% 1	Unk		Unk		United Blood Services	
1					CO Adams State College		50	39	78.0%	50	42	84.0%	30	71.4%	1	20	47.6%	Bonfils Blood Center
					AZ Arizona State University		55	39	70.9%	70	47	67.1%	24	51.1%	23	48.9%	United Blood Services	
					AZ Estrella Mountain Community College		27	31	114.8%	32	46	143.8%	15	32.6%	8	17.4%	United Blood Services	
					AZ Glendale Community College		35	45	128.6%	40	42	105.0%	8	19.0%	7	16.7%	United Blood Services	
					AZ Northern Arizona University		35	31	88.6%	50	35	70.0%	15	42.9%	17	48.6%	United Blood Services	
					CA Azusa Pacific University		57	50	87.7%	69	66	95.7%	Unk		Unk		American Red Cross	
					CA Butte College		125	131	104.8%	175	160	91.4%	26	16.3%	29	18.1%	BloodSource	
					CA Cal State East Bay		42	42	100.0%	42	51	121.4%	18	35.3%	15	29.4%	American Red Cross	
					CA California Lutheran University		35	21	60.0%	42	27	64.3%	8	29.6%	4	14.8%	City of Hope National Medical Center	
					CA Chabot College		46	39	84.8%	55	53	96.4%	17	32.1%	14	26.4%	Blood Centers of the Pacific	
					CA Contra Costa College		37	29	78.4%	43	43	100.0%	Unk		Unk		Blood Centers of the Pacific	
					CA CSU Long Beach		24	21	87.5%	25	31	124.0%	Unk		Unk		American Red Cross	
					CA CSU Fullerton		24	19	79.2%	29	27	93.1%	18	66.7%	Unk		American Red Cross	
					CA CSU Los Angeles		50	51	102.0%	50	64	128.0%	33	51.6%	16	25.0%	LifeStream	
					CA CSU San Bernardino		35	21	60.0%	42	30	71.4%	5	16.7%	7	23.3%	City of Hope National Medical Center	
					CA CSU, Pomona (CalPoly)		24	24	100.0%	29	34	117.2%	10	29.4%	8	23.5%	American Red Cross	
					CA Fresno Pacific University		70	64	91.4%	70	79	112.9%	11	13.9%	15	19.0%	Central California Blood Center	
					CA Humboldt State University		47	34	72.3%	60	51	85.0%	Unk		11	21.6%	Northern California Comm Blood Bank	
					CA La Sierra University		33	34	103.0%	42	62	147.6%	20	32.3%	29	46.8%	American Red Cross	
					CA Long Beach City College		66	71	107.6%	60	62	103.3%	Unk		Unk		American Red Cross	
					CA Mendocino Community College		29	20	69.0%	40	38	95.0%	Unk		Unk		Blood Centers of the Pacific	
					CA Menlo College		70	85	121.4%	70	90	128.6%	17	18.9%	18	20.0%	American Red Cross	
					CA Moorpark College		20	26	130.0%	24	22	91.7%	7	31.8%	7	31.8%	United Blood Services	

National Cesar E. Chavez Blood Drive Challenge

2012 - Most Successful Blood Drive - Award

RED numbers are Points earned based on a 20-1 scale; 20 points going to the 1st (most) place scaling down to 1 point to the 20th place within each of the 10 different point categories; then accumulated points are added up for a school total
 Blood drives that usually accumulate the most points are typically larger blood drives, they surpass their own set goals, and successfully report complete results data.

Points	2012	2011	2010	2009	225 Participating Colleges / Universities	Avg:	Total:	Pints Goal	Pints Collected	% of Goal	Donors Goal	Donors Registered	% of Goal	Donors H/L	% of Donors	Donors 1st	% of Donors	Blood Center
							16,655	16,075		20,596	19,080		5,479		27	32%		
							74	71	102%		91	86	102%	30	38%	27	32%	
	CA				Mt. San Antonio College		107	39	36.4%		129	45	34.9%	Unk		Unk		American Red Cross
	CA				Napa Valley College		16	19	118.8%		20	22	110.0%	8	36.4%	5	22.7%	Blood Centers of the Pacific
	CA				National Hispanic University		25	26	104.0%		25	33	132.0%	22	66.7%	9	27.3%	Blood Centers of the Pacific
	CA				Occidental College		40	53	132.5%		50	68	136.0%	20	29.4%	18	26.5%	Hunting Hospital
	CA				Oxnard College		46	54	117.4%		56	41	73.2%	27	65.9%	11	26.8%	United Blood Services
	CA				Palo Verde College		35	31	88.6%		40	36	90.0%	11	30.6%	3	8.3%	Community Blood Bank
	CA				Pierce College		52	62	119.2%		62	79	127.4%	51	64.6%	22	27.8%	American Red Cross
	CA				Point Loma Nazarene University		40	46	115.0%		48	57	118.8%	15	26.3%	10	17.5%	American Red Cross
	CA				Pomona College		100	73	73.0%		120	85	70.8%	Unk		Unk		American Red Cross
	CA				San Diego State University		72	79	109.7%		90	85	94.4%	19	22.4%	30	35.3%	San Diego Blood Bank
	CA				San Francisco State University		50	29	58.0%		100	41	41.0%	19	46.3%	21	51.2%	Blood Centers of the Pacific
	CA				San Joaquin Delta Community College		50	58	116.0%		60	80	133.3%	47	58.8%	14	17.5%	Delta Blood Bank
	CA				Santa Clara University		30	35	116.7%		45	46	102.2%	Unk		Unk		Blood Centers of the Pacific
	CA				Santa Monica College		48	48	100.0%		60	60	100.0%	32	53.3%	12	20.0%	American Red Cross
	CA				Santa Rosa Community College		105	79	75.2%		143	116	81.1%	20	17.2%	37	31.9%	Blood Centers of the Pacific
	CA				Santiago Canyon College		24	23	95.8%		29	32	110.3%	20	62.5%	15	46.9%	American Red Cross
	CA				Stanford University		42	33	78.6%		55	50	90.9%	8	16.0%	5	10.0%	Stanford Blood Center
	CA				UC Santa Barbara		62	65	104.8%		80	80	100.0%	34	42.5%	23	28.8%	United Blood Services
	CA				UC Santa Cruz		55	55	100.0%		66	68	103.0%	20	29.4%	29	42.6%	American Red Cross
	CA				University of San Diego		56	60	107.1%		68	62	91.2%	4	6.5%	23	37.1%	San Diego Blood Bank
	CA				University of San Francisco		30	34	113.3%		40	50	125.0%	Unk		Unk		American Red Cross
	CA				University of the Pacific		80	56	70.0%		85	61	71.8%	15	24.6%	23	37.7%	Delta Blood Bank
	CA				West Los Angeles College		22	22	100.0%		36	36	100.0%	20	55.6%	17	47.2%	American Red Cross
	CA				Whittier College		30	40	133.3%		40	56	140.0%	16	28.6%	12	21.4%	American Red Cross
	CA				Yuba College		45	57	126.7%		60	66	110.0%	21	31.8%	21	31.8%	BloodSource
	CO				Colorado State University		110	67	60.9%		122	85	69.7%	9	10.6%	17	20.0%	Bonfils Blood Center
5th	CO				Metropolitan State College of Denver		38	52	136.8%		56	57	101.8%	24	42.1%	30	52.6%	Bonfils Blood Center
	CO				University of Colorado		70	50	71.4%		80	57	71.3%	10	17.5%	20	35.1%	Bonfils Blood Center
	CT				Central Connecticut State University		90	83	92.2%		130	109	83.8%	23	21.1%	Unk		American Red Cross
	CT				Eastern Connecticut State University		105	110	104.8%		130	120	92.3%	29	24.2%	Unk		American Red Cross
	CT				Three River Community College		120	94	78.3%		120	106	88.3%	12	11.3%	8	7.5%	American Red Cross
	CT				Trinity College		55	48	87.3%		120	70	58.3%	10	14.3%	32	45.7%	American Red Cross
	CT				University of Hartford		65	41	63.1%		65	90	138.5%	10	11.1%	Unk		American Red Cross
	CT				University of New Haven		52	39	75.0%		60	52	86.7%	13	25.0%	Unk		American Red Cross
	DC				Georgetown University		53	77	145.3%		83	117	141.0%	6	5.1%	30	25.6%	American Red Cross
	FL				Florida State University		25	36	144.0%		25	38	152.0%	12	31.6%	12	31.6%	Southeastern Community Blood Center
	FL				Nova Southeastern University		25	35	140.0%		50	55	110.0%	4	7.3%	19	34.5%	Community Blood Centers of South FL
	GA				Abraham Baldwin Agricultural College		50	67	134.0%		70	78	111.4%	35	44.9%	15	19.2%	American Red Cross
	GA				Emory University		65	27	41.5%		100	31	31.0%	Unk		Unk		American Red Cross
	GA				Georgia Institute of Technology		36	35	97.2%		50	40	80.0%	10	25.0%	17	42.5%	American Red Cross
	GA				The University of Georgia		32	28	87.5%		40	34	85.0%	Unk		Unk		American Red Cross
	ID				Boise State University		30	31	103.3%		45	40	88.9%	20	50.0%	12	30.0%	American Red Cross
	ID				College of Southern Idaho		100	108	108.0%		120	137	114.2%	25	18.2%	46	33.6%	American Red Cross
	ID				Idaho State University - Pocatello		25	18	72.0%		35	23	65.7%	0	0.0%	2	8.7%	American Red Cross
	ID				Lewis-Clark State College		20	15	75.0%		27	29	107.4%	7	24.1%	16	55.2%	Inland Northwest Blood Center
	ID				University of Idaho		32	25	78.1%		41	50	122.0%	31	62.0%	25	50.0%	Inland Northwest Blood Center
	IL				Chicago State University		34	45	132.4%		38	58	152.6%	39	67.2%	20	34.5%	LifeSource Blood Center
	IL				DePaul University		40	22	55.0%		60	31	51.7%	15	48.4%	5	16.1%	LifeSource
	IL				Northwestern University		35	27	77.1%		40	34	85.0%	8	23.5%	12	35.3%	American Red Cross
	IL				Saint Xavier University		28	20	71.4%		40	25	62.5%	2	8.0%	0	0.0%	American Red Cross
	IL				University of Illinois - Champaign-Urbana		20	9	45.0%		25	14	56.0%	Unk		Unk		Community Blood Services of Illinois
	IL				University of Illinois - Chicago		40	29	72.5%		50	39	78.0%	14	35.9%	Unk		Hospital & Health Sciences System
	IN				DePauw University		36	2	5.6%		42	2	4.8%	Unk		Unk		Indiana Blood Center
	IN				Purdue University - Calumet		60	61	101.7%		72	79	109.7%	6	7.6%	23	29.1%	American Red Cross
	IN				Purdue University - West Lafayette		50	12	24.0%		40	13	32.5%	7	53.8%	4	30.8%	Indiana Blood Center

National Cesar E. Chavez Blood Drive Challenge

2012 - Most Successful Blood Drive - Award

RED numbers are Points earned based on a 20-1 scale; 20 points going to the 1st (most) place scaling down to 1 point to the 20th place within each of the 10 different point categories; then accumulated points are added up for a school total. Blood drives that usually accumulate the most points are typically larger blood drives, they surpass their own set goals, and successfully report complete results data.

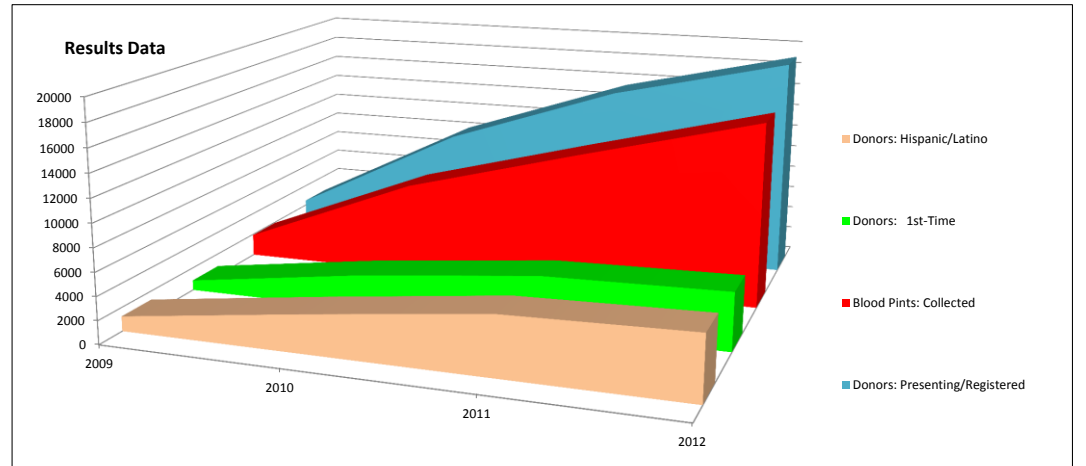
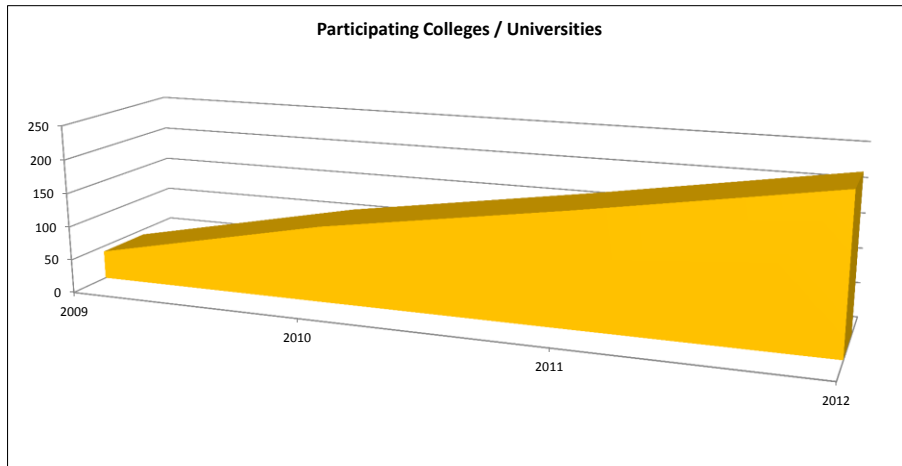
Points	2012	2011	2010	2009	225 Participating Colleges / Universities	Avg:	Total:	Pints Goal	Pints Collected	% of Goal	Donors Goal	Donors Registered	% of Goal	Donors H/L	% of Donors	Donors 1st	% of Donors	Blood Center	
							16,655	16,075		20,596	19,080		5,479		4,960				
							74	71	102%		91	86	102%	30	38%	27	32%		
					IN	University of Notre Dame	45	21	46.7%	60	27	45.0%	Unk			Unk		South Bend Medical Foundation	
					KS	University of Kansas - Kansas City - Medical School	40	33	82.5%	48	42	87.5%	Unk		6	14.3%	6	Community Blood Center	
					KS	Washburn University	40	24	60.0%	55	25	45.5%	6	24.0%	5	20.0%	5	Community Blood Center	
					KS	Wichita State University	127	101	79.5%	152	149	98.0%	9	6.0%	25	16.8%	25	American Red Cross	
					MA	Boston University	45	22	48.9%	50	31	62.0%	0	0.0%	7	22.6%	7	American Red Cross	
					MA	Northeastern University	75	48	64.0%	100	59	59.0%	Unk		Unk		Unk	American Red Cross	
					MD	University of Maryland - College Park	50	50	100.0%	60	62	103.3%	Unk		Unk		Unk	American Red Cross	
					MN	University of Minnesota	30	29	96.7%	35	42	120.0%	3	7.1%	11	26.2%	11	American Red Cross	
	6th				MO	Crowder College	63	68	107.9%	74	74	100.0%	27	36.5%	15	20.3%	15	American Red Cross	
					NC	East Carolina University	25	31	124.0%	35	37	105.7%	5	13.5%	16	43.2%	16	American Red Cross	
					NC	University of North Carolina - Pembroke	85	80	94.1%	102	84	82.4%	Unk		Unk		Unk	American Red Cross	
					NE	Peru State College	55	55	100.0%	66	51	77.3%	Unk		11	21.6%	11	American Red Cross	
					NM	Eastern New Mexico University	58	62	106.9%	70	60	85.7%	25	41.7%	32	53.3%	32	United Blood Services	
					NM	New Mexico State University Main	80	111	138.8%	130	90	69.2%	43	47.8%	17	18.9%	17	United Blood Services	
					NM	Northern New Mexico College	24	24	100.0%	27	32	118.5%	13	40.6%	9	28.1%	9	United Blood Services	
					NV	University of Nevada, Las Vegas	11	11	100.0%	13	16	123.1%	8	50.0%	5	31.3%	5	United Blood Services	
					OH	The Ohio State University	90	60	66.7%	100	75	75.0%	Unk		Unk		Unk	American Red Cross	
					OK	Oklahoma State University - Stillwater	30	14	46.7%	36	16	44.4%	7	43.8%	0	0.0%	0	American Red Cross	
					OR	Chemeketa Community College	35	28	80.0%	45	34	75.6%	15	44.1%	10	29.4%	10	American Red Cross	
					OR	Oregon Coast Community College	Unk	Unk		41	41	100.0%	Unk		14	34.1%	14	American Red Cross	
					OR	Oregon Health & Science University	21	19	90.5%	27	22	81.5%	3	13.6%	7	31.8%	7	American Red Cross	
					OR	Western Oregon University	30	22	73.3%	50	31	62.0%	Unk		9	29.0%	9	American Red Cross	
					PA	Esperanza College of Eastern University	40	22	55.0%	48	22	45.8%	14	63.6%	10	45.5%	10	American Red Cross	
					PA	The Pennsylvania State University	100	83	83.0%	120	97	80.8%	26	26.8%	11	11.3%	11	American Red Cross	
					PA	University of Pennsylvania	28	20	71.4%	32	16	50.0%	2	12.5%	6	37.5%	6	American Red Cross	
					RI	Rhode Island College	125	97	77.6%	150	130	86.7%	Unk		Unk		Unk	Rhode Island Blood Center	
					TX	Baylor University - College of Medicine	90	63	70.0%	108	78	72.2%	12	15.4%	15	19.2%	15	Gulf Coast Regional Blood Center	
					TX	Cedar Valley - Dallas County Community Colleges	100	16	16.0%	120	27	22.5%	15	55.6%	7	25.9%	7	American Red Cross	
					TX	Galveston College	30	21	70.0%	30	30	100.0%	11	36.7%	7	23.3%	7	Gulf Coast Regional Blood Center	
					TX	Houston Community College	50	36	72.0%	60	46	76.7%	27	58.7%	15	32.6%	15	Gulf Coast Regional Blood Center	
					TX	Laredo Community College	28	10	35.7%	33	10	30.3%	Unk		Unk		Unk	South Texas Blood And Tissue Center	
					TX	Our Lady of the Lake University	100	67	67.0%	120	81	67.5%	50	61.7%	6	7.4%	6	7.4%	South Texas Blood and Tissue Center
					TX	Palo Alto College	112	92		136	Unk		Unk		Unk		Unk	South Texas Blood and Tissue Center	
					TX	Rice University	40	37	92.5%	35	39	111.4%	12	30.8%	6	15.4%	6	15.4%	Gulf Coast Regional Blood Center
					TX	Sam Houston State University	40	46	115.0%	40	45	112.5%	Unk		Unk		Unk	Gulf Coast Regional Blood Center	
					TX	San Antonio College	184	128		221	Unk		Unk		Unk		Unk	South Texas Blood and Tissue Center	
					TX	San Jacinto College Central - North Campus	40	57	142.5%	48	56	116.7%	30	53.6%	15	26.8%	15	26.8%	Gulf Coast Regional Blood Center
					TX	St. Edward's University	25	34	136.0%	50	38	76.0%	12	31.6%	21	55.3%	21	55.3%	Blood and Tissue Center of Central TX
					TX	St. Mary's University	138	121		150	Unk		Unk		Unk		Unk	South Texas Blood and Tissue Center	
					TX	Texas A&M University - Commerce	35	29	82.9%	50	17	34.0%	Unk		Unk		Unk	American Red Cross	
					TX	Texas A&M University - Kingsville	55	71	129.1%	75	88	117.3%	48	54.5%	45	51.1%	45	51.1%	Coastal Bend Blood Center
					TX	Texas Southern University	25	11	44.0%	40	20	50.0%	1	5.0%	0	0.0%	0	0.0%	Gulf Coast Regional Blood Center
					TX	Texas State Technical College	80	11	13.8%	104	137	131.7%	67	48.9%	44	32.1%	44	32.1%	United Blood Services
					TX	Texas State University at San Marcos	16	22	137.5%	18	27	150.0%	1	3.7%	14	51.9%	14	51.9%	Blood and Tissue Center of Central TX
					TX	The Victoria College	55	33	60.0%	70	31	44.3%	Unk		Unk		Unk	South Texas Blood and Tissue Center	
					TX	University of Houston - Downtown Campus	97	120	123.7%	120	112	93.3%	Unk		Unk		Unk	Gulf Coast Regional Blood Center	
					TX	University of Houston - Main Campus	72	94	130.6%	90	107	118.9%	44	41.1%	20	18.7%	20	18.7%	Gulf Coast Regional Blood Center
					TX	University of St. Thomas	55	54	98.2%	70	66	94.3%	Unk		Unk		Unk	Gulf Coast Regional Blood Center	
					TX	University of the Incarnate Word	36	45	125.0%	42	48	114.3%	Unk		Unk		Unk	South Texas Blood and Tissue Center	
					UT	Utah State University	100	126	126.0%	120	Unk		Unk		Unk		Unk	American Red Cross	
					VA	University of Virginia	50	46	92.0%	70	44	62.9%	8	18.2%	14	31.8%	14	31.8%	Virginia Blood Services
	7th				WA	Columbia Basin College	55	33	60.0%	40	38	95.0%	22	57.9%	20	52.6%	20	52.6%	American Red Cross
					WA	Heritage University Toppenish	24	17	70.8%	29	31	106.9%	21	67.7%	Unk		Unk		American Red Cross
					WA	North Seattle Community College	30	26	86.7%	35	53	151.4%	2	3.8%	15	28.3%	15	28.3%	Puget Sound Blood Center
					WA	Seattle Central Community College	30	21	70.0%	36	24	66.7%	2	8.3%	11	45.8%	11	45.8%	Puget Sound Blood Center

National Cesar E. Chavez Blood Drive Challenge

2012 - Most Successful Blood Drive - Award

RED numbers are Points earned based on a 20-1 scale; 20 points going to the 1st (most) place scaling down to 1 point to the 20th place within each of the 10 different point categories; then accumulated points are added up for a school total. Blood drives that usually accumulate the most points are typically larger blood drives, they surpass their own set goals, and successfully report complete results data.

Points	2012	2011	2010	2009	225 Participating Colleges / Universities	Avg:	Pints Goal	Pints Collected	% of Goal	Donors Goal	Donors Registered	% of Goal	Donors H/L	% of Donors	Donors 1st	% of Donors	Blood Center
							16,655	16,075		20,596	19,080		5,479		4,960		
							74	71	102%	91	86	102%	30	38%	27	32%	
	WA				Seattle University		42	45	107.1%	50	59	118.0%	3	5.1%	6	10.2%	Puget Sound Blood Center
	WA				South Seattle Community College, Seattle		NA	NA		NA	NA		NA		NA		Puget Sound Blood Center
	WA				University of Washington		100	86	86.0%	130	86	66.2%	22	25.6%	25	29.1%	Puget Sound Blood Center
	WA				Yakima Valley Community College		30	35	116.7%	43	40	93.0%	Unk		10	25.0%	American Red Cross
	WI				University of Wisconsin - Milwaukee		30	18	60.0%	36	18	50.0%	10	55.6%	6	33.3%	Blood Center of Wisconsin
	WI				University of Wisconsin - Oshkosh		35	25	71.4%	42	25	59.5%	Unk		Unk		American Red Cross
	WI				University of Wisconsin - Parkside		48	39	81.3%	54	52	96.3%	13	25.0%	16	30.8%	Blood Center of Wisconsin



Colleges / Universities	Count
2009	42
2010	113
2011	167
2012	225

	Donors: Hispanic/Latino	Donors: 1st-Time	Blood Pints: Collected	Donors: Presenting/Registered
2009	1,265	873	1,931	2,468
2010	3,244	2,992	8,054	10,231
2011	5,083	4,609	12,151	15,504
2012	5,479	4,960	16,075	19,080

Note: Hispanic/Latino & 1st-time donors are under-reported; only 75% of blood drives reported Hispanic/Latino & 1st-time donor counts. Over-all participation is under-reported as 50% of blood drives surpassed their set goals/projections and no longer had donor appointment slots available.